



News²⁰¹⁵

新产品²⁰¹⁵

Tools and equipment
工具和设备



B
BERGEON
Depuis 1791

DUNE



N° 7870-D



Ergonomic DUNE Watchmaker Bench

Wooden, aluminum and stainless steel structure.
Electrical height adjustment with positions memory.
Table board dimension of 1300 x 700 x 25 mm.
Reversible desktop black/white.
3D armrests out of synthetic leather.
Drawer chest with a shock absorbing system for a smooth closing.

DUNE 钟表匠工作枱

设计精美配合人体工学的钟表维修匠的专用工作台
由铝、不锈钢及木等材料结合制成。
内置四组无段升降调记忆。
台面尺寸:1300 x 700 x 25 mm。
黑/白两色可反向使用垫板。
人造皮革制成的多角度调整手靠。缓进式抽屉。

B I F L E X

SWISS MADE

N° 7943




SWISS
MADE

Air/Vacuum for Bench

Complete Biflex system with counterweights and locking device. Including precision blower and vacuum brush.

To enhance ergonomics, the pipes are adjustable, flexible and separable.

装于工作台的吹/吸尘套件

配以精密吹管与吸尘扫。
柔性套管可作多方位移动以方便使用。
附喉管锁紧、自动复位功能。

N° 7809



Precise bellows

Flow adjustable by pusher,
to be used with a compressor or on the network.

精密吹风笔

按钮式风速控制
配合空压机 或 气动网络使用。

N° 8809



Vacuum stylus

Flow adjustable by pusher,
to be used with a vacuum pump or on the network.

真空笔

按钮式风速控制
配合真空机 或 真空网络使用。

N° 6100-230



700 x 440 x 590 mm

*Pression
Druck
Pressure
Presión*



*Vacuum
Vakuum
Vacuum
Vacío*



Combi-vacuum compressor with air dryer

Vacuum: -0.8 bars.
Pressure: 8 bars.
Sound level: 40 dB.
Flow: 50 L / min.
Tank: 2x14 L.

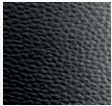
真空 / 空压两用机 附干燥系统

最大真空度： -0.8大气压。
最高压力： 8 大气压。
最高噪音： 40 dB。
最高气流量： 50 升/分钟。
气缸尺寸： 2 x 14 升。

N° 7327



280 x 180 x 25 mm.



In leatherette with silicone padding.
人造皮革填充硅凝胶。



Removable armrests

Pair of ergonomic leatherette armrests which are non-slipping. Ideal for benches which are not equipped with armrests.

可拆卸的手靠

一对符合人体工程学的人造皮革防滑手靠。配合没手靠的工作椅使用最为理想。

N° 7153

∅ 60 mm. ∅ 8 mm.



Base for dialplates

New execution.

In synthetic material.
The many small holes allow an easy and simple positioning of the dialfeet.

表盘座

新型号

合成材料制成。
表盘座附大量小孔，方便及简易地把表盘脚定位。



Anti-skid bench mat

Slightly soft and flexible allowing to execute various works such as assembly, casing and control in optimal conditions thanks to a better contrast with the different colours.

Size: 320 x 240 x 2 mm.

防滑台垫

具柔软及灵活特性。
无需粘贴，适用于装配及品质检查等工序。
分别有绿、白、黑等颜色供选择以配合工作所需。
尺寸：320 x 240 x 2 mm.

N° 7965-...

+ SWISS MADE
 PATENT PENDING



N° 7965-S10



Ø 0.50 - 0.60 - 0.80 - 1.00 - 1.20 - 1.40 - 1.60 - 2.00 - 2.50 - 3.00 mm



**Watchmaker screwdriver,
 special knurled profile**

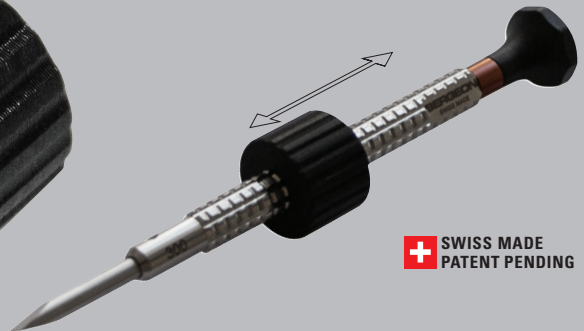
Handle made of stainless steel with special profile compatible with the 7965-C... cylinder.
 Conical blade made of hardened stainless steel 54HRC.
 Head made of synthetic material POM self-lubricant.
 Can be used also without torque barrel.

修表匠专用螺丝刀, 附特殊滚花杆身

特殊形状柄袖由不锈钢制成, 可配用7965-C...力矩环。

锥形刀片由硬化不锈钢54HRC制成。
 螺丝刀头由合成材料POM制成, 具有自润滑作用。
 螺丝刀无需配上7965-C...而作独立使用。

N° 7965-T



+ SWISS MADE
 PATENT PENDING

Removable drum

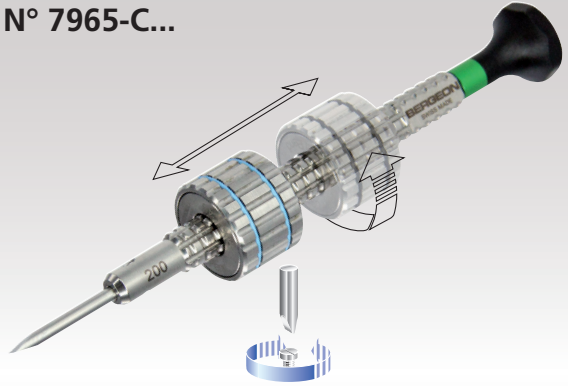
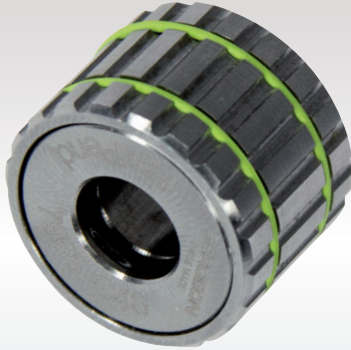
Increased clamping force.
 Compatible with screwdriver 7965-...

可拆卸的鼓轮

提高夹紧力。
 可配合7965-...螺丝刀使用。

**TORK
SPEED**
PATENT PENDING
SWISS MADE

N° 7965-C...



10 - 15 - 20 - 25 - 30 - 35 - 40 - 45 - 50 - 55 - 60 mNm

+ SWISS MADE
PATENT PENDING



Demountable dynamometric cylinder

Stainless steel. Fit on all specific screwdrivers with reference 7965-...
Pre-set, fixed torque: 10 to 60 mNm.
Bidirectional cylinder. Can be easily positioned on the whole length of the handle of the screwdriver.
Possibility to equip the screwdriver with 2 cylinders.

可拆卸的力矩环

不锈钢制成。适用于特定的螺丝刀，请参阅7965-...
预先设定的固定扭矩：10~60 mNm。
双向环，可以很容易地定位在螺丝刀的手柄的整个长度。
一支螺丝刀能同时装上两个力矩环。

N° 7965-GS



Big base

For 10 watchmaker screwdrivers with special profile and 10 removable dynamometric cylinders.
In aluminum.

大型螺丝刀座

每力座可放10支修表匠专用的螺丝刀及10个力矩环，特别附有资料在座上。

N° 7965-PREMIUM

TORK
SPEED
 PATENT PENDING
 SWISS MADE



+ SWISS MADE
 PATENT PENDING



Premium suitcase in aluminum

Containing:

10 watchmaker screwdrivers with special profile
 ref. 7965-... 050 to 3.00 mm.
 Tube with 2 conical blades made of hardened
 stainless steel 54HRC ref. 6899-T.
 Tube with 1 parallel blade ref. 6895-M, per diameter.
 10 exchangeable dynamometric cylinders
 ref. 7965-C... 10 to 55 mNm.

优质铝制手提箱

包含:

10支修表匠专用的螺丝刀配备特殊配置, 请参阅7965-...
 050 - 3.00mm。
 胶筒内有2支锥形备用刀玉, 以硬化不锈钢54HRC制
 成, 请参阅6899-T。
 及1支平行玉, 请参阅6895-M。每支不同的直径,
 可换上10个不同的力矩环, 参考7965-C... 10-55 mNm。

N° 30180-A-C1



○ Ø 8, 9, 10 mm

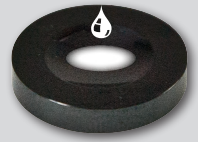
● Ø 10 mm



N° 30180-A-C2



○ Ø 6, 8, 9, 10 mm



Oil Cup Stand in die-cast alloy

4 containers made of black or white ceramic.
Colour contrast for a better visibility of the oil.

合金铸制油杯座

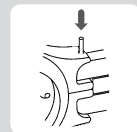
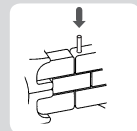
4个黑或白色陶瓷制油杯。
可供清楚分辨所用润滑油。

Content - 内含

- 6745-G: 1x 040/060/080/1.00/1.50/2.00 mm
- 6745-M: 2x 080/1.00/1.20 mm
- 6745-MC: 1x 1.50/2.00 mm

B-PRESS
 SWISS MADE

N° 8745



Multifunction Press

Made of composite material.
 To insert and remove pins as well as to screw and unscrew watch bracelets.

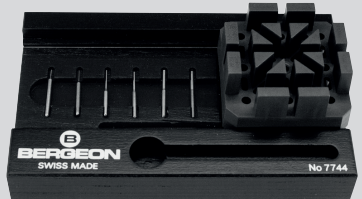
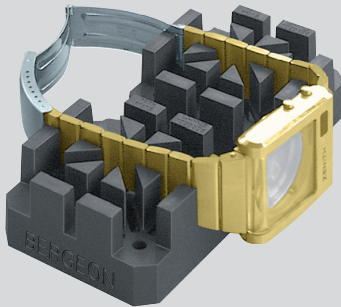
多功能表带装拆工具

以人工合成材料制造。
 内藏标准配件。
 供安装/拆除金属表带的穿针及螺丝。

N° 7744-1



140 x 87 x 21 mm



Tools to drive out bracelet pins

New execution.

On wooden base.

Composed of:

- 2 supports No 6744-P1.
- 6 pins Ø 0.40 to 2.00 mm No 6745-G.
- 1 pinholder No 6744-PG.
- 1 wooden base No 6744-S.

拆表带针栅工具

全新木座套装

由以下配件组成：

- 2 个表带固定座6744-P1
- 6支针 直径0.40-2.00毫米6745-G
- 1 座针座6744-PG
- 1 木座6744-S

B-SETTING4
SWISS MADE

N° 8935



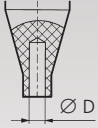
**Setting tool with 4 runners
for hands**

Interchangeable stakes made of synthetic material.
Base: Ø 31 mm. Enhanced guidance of the spindles.
High precision of positioning.

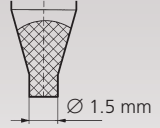
四针装针机

人造材料制压头及不锈钢制装针轴
Ø 31mm底座。强化针轴套筒
高精度中轴线

N° 8404-S04



Ø D: 0.6 - 1.2 - 1.6 mm



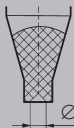
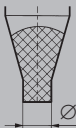
Assortment of hand setting tools with rotating head and base

Hand setting tools with tips in synthetic material. Rotating head for an easy indexing of the hands.

套装四支，附旋转头装针工具连底座

装针工具冲头以人造合成材料制成。附旋转头，易于使用在不同的表针。

N° 7404-S03



Ø D: 1.00 - 0.50 / 1.50 - 0.80 mm



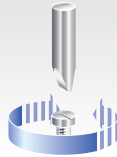
Base with an assortment of hand setting tools

Hand setting tools with tips in PVC.

套装三支装针工具连底座

装针工具配PVC塑料制成冲头。

N° 6950-KIT050



Digital Torsiometer

To control or measure the torque of dynamometrical screwdrivers

- Display: 0.05mNm / 0.05cNm
- 3 jaws universal chuck for clamping
- Adaptor-kit for quick controlling
- Windows driver, software to export measurements into Excel
- Precision: $\pm 2\%$
- Supplied with calibration certificate.

套装力矩测试仪

用于测试扭力螺丝刀的力矩。

- 显示：0.05mNm / 0.05cNm。
- 三爪式多用途夹头。
- 专用套入式套件。
- Windows Excel软件供输出测量数据。
- 精确度： $\pm 2\%$
- 出厂附较准证书。



Safety
 安全扣带



N° 7802-115
7802-230
Final Test - 1 rpm
Final Test - 1转/分钟



SWISS
 MADE



N° 7803-115
7803-230
Automatic Test - 4 rpm
Automatic Test - 4转/分钟



N° 7802-SV

Testing Machines

- For testing watch working
- For automatic winding.

Can principally be used vertically.
 New secured watch fixing, synthetic foam.
 For watches with or without strap.

自动手表上条仪

- 供测试自动上条系统。
- 供自动手表上条。

可水平或垂直使用。
 合成泡沫胶制表垫供安全固定有或无带手表。
 可调旋向。

TIME
RUNNER
SWISS MADE



N° 7047-PRO1-TP



The horizontally and vertically adjustable table allows a very good stability

备有垂直及水平调较机芯/手表台座以维持操作的稳定性。



N° 7047-PRO1

Winding machine for mechanic and automatic watches

The new tool for winding watches through the crown allows to control the following functions on movements with factory stem as well as on complete watches: winding, date setting and time setting.

Technicals characteristics:

- Number of winding revolutions: 0 to 999
- Torque control: 5 to 30mNm
- Revolution speed: 60 to 300 Rpm.

用于机械手表及自动手表的上条机

此新产品适用于配备原厂龙芯/龙头的机芯及各类成品手表。

可供上条及日历调较。

技术资料：

- 可预设0至999上条圈数。
- 可预设扭力：5至30微牛顿。
- 可调转速：60至300转/分钟。

N° 7804



lepsi

BY **BERGEON**

Watch Analyzer

The Watch Analyzer is a measuring device for mechanical movements and runs under Android or iOS. An adjustable support incorporate the measuring electronics.

This device measures very accurately the running time, the frequency, the guide-mark and the amplitude of mechanical watches.


Watch Analyzer

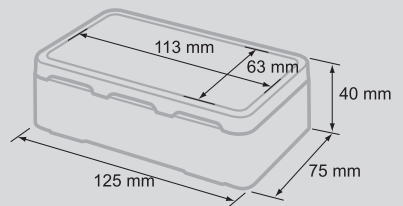
本手表分析仪专供配合Android 或 iOS 程序来测试机械机芯/手表的走时精度。

可调基座内附电子测试系统。

本手表分析仪可精确测量机械手表的走时精度、频率、擒纵轨迹、振幅等。

N° 7044-PRO

 20 < 160°



Electric heater with adjustable temperature

Electronic case with double digital display.
Working surface of 63 x 113 mm.
The heater can memorize 2 pre-set temperatures.
100 to 250 VAC. 50/60 Hz.
Cable silicone, resistant to heat.
Led for warning of heating.

可控温电热器

双数字显示屏
63 x 113 mm工作热板
经改良的精准工作温度，最高达180摄氏度
可记忆两个自设工作温度
100 ~ 250 VAC 50/60赫斯工作电压
防热硅质电线
发光二极管警告灯

N° 7825




SWISS
MADE

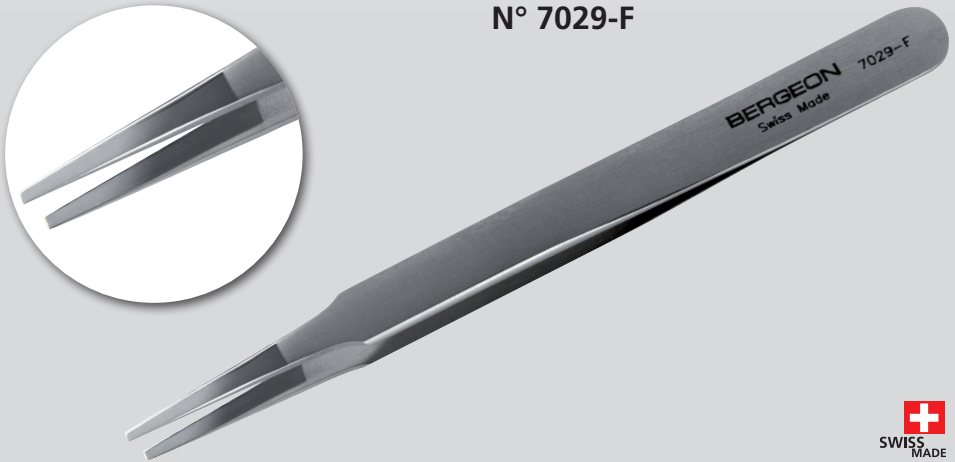
Spring bar tweezers

Allows to take off the bracelet from the watchcase without removing the clasp.
The points are replaceable.

生耳(弹簧杆)用镊子

供拆除表带而无需拆除附于表壳上的夹头
可更换叉头

N° 7029-F




SWISS
MADE

Tweezers for hands

In stainless steel with mirror polished tips.
To dress the hands and avoid scratching.

镊子，用於表针的镊子

不锈钢，镜面抛光尖端。
用於平整表针且防刮花表针。

QUICK SERVICE

N° 7812



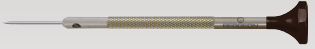
N° 6460-P



N° 7026-00



N° 30081-100



N° 30081-160



N° 6767-S



N° 7230



N° 2611-2.5

N° 6789-G



N° 2510-N

N° 2819-MINI



N° 30080-TN



N° 6899-M-100
 N° 6899-M-160



N° 6767-A



N° 6767-B



N° 7230-G08

N° 7403



N° 7039



Tools-case Quick Service

For the batteries service, bracelets change and length setting.

Contents: 18 specialized tools and accessories.

供快速修理用的工具箱

供更换 电池、更改表带长度之用。

内含18种基本工具及配件。

N° 5393-75 Ø 75 mm



N° 5393-55 Ø 55 mm



COUSSIN
GRIP
SWISS MADE



Casing cushion

Holder with soft, non-slip material on both sides which doesn't leave any marks.

Washable with soapy water or by using the Bergeon 7040 wipers.

表垫

新柔性材料制表垫。防滑，可两面使用。
可清洗或用Bergeon 7040抹纸来清洁。

N° 5395-75 Ø 75 mm



COUSSIN
GEL

N° 5395-55 Ø 55 mm



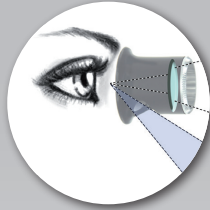
Gel casing cushion

Soft and will not scratch the parts.
Match the shape of watchcases with different geometries.

凝胶表垫

柔软并不会刮花手表配件。
可配合不同几何形状的表壳。

N° 2611-TN-...



N° 2611-TB-...



✂ 6.7x / 5x / 4x / 3.3x / 2.8x / 2.5x

Watchmaker's eyeglass

Made of synthetic material with anti-mist and sight opening.

修表匠专用的放大镜

由合成材料制成并具有抗雾和视线开口功能。

N° 2611-B-...



N° 2611-N-...



✂ 6.7x / 5x / 4x / 3.3x / 2.8x / 2.5x

Watchmaker's eyeglass

Made of synthetic material.

修表匠专用的放大镜

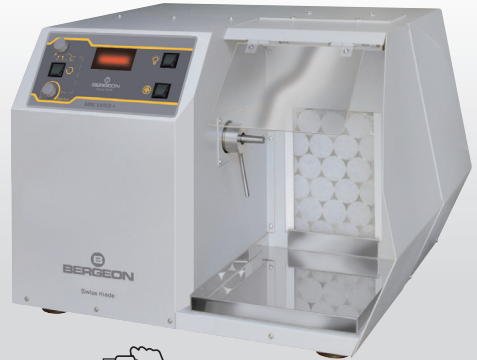
由合成材料制成。



N° 6890-G



N° 6890-D



Combination for 2 stations - 由两台机组成的完整组合



Compact polishing unit Vario

For use right- and left-handed person.

Machine speed in rpm is controlled by an electronic variator.

Independent dust collection and incorporated lighting.

Technical characteristics:

Constant torque motor, 0.5 hp. Current: 1.7 A.

Complies with CE standard.

Max. arbor Ø: 200 mm.

Vario 精密打磨机

分别供左及右手使用

利用电子变频器改变转速

独立式过滤网，内置照明

技术数据：

恒定扭力马达：0.5 Hp. 电流量：1.7 A.

CE标准。

转轴最大直径：200 mm

N° 7841



LED light with magnifier

Lens in \varnothing 95 mm with 2x magnification and lens incorporated in \varnothing 25 mm with 4x magnification. Flexible arm. Also with battery. Magnetic stand.

附发光二极管照明的放大镜

镜片： \varnothing 95mm 2x倍放大率 附 \varnothing 25mm 4x倍放大率。柔性支架。附电池。磁性底座。



Find all our products online
在线查找我司产品

www.bergeon.ch



OUR DISTRIBUTORS IN HONG KONG 我司在及香港的分销商

JC UNIVERSAL CO., LTD

伊博国际有限公司 香港，九龙，荔枝角，长顺街19号，
杨耀松(第六)工业大厦，10字楼，A1室。

电话：852-2664 9999 - 传真：852-2512 6491 - 电邮：info@jcucl.com.hk

NAM HING WATCH MATERIAL & TOOLS CO., LTD

南兴钟表材料行有限公司 香港，九龙，油麻地，白加士街，117号，地下。

电话：852-2388 6341 - 传真：852-2771 7972 - 电邮：nhywatch@netvigator.com

PERFECT TRADE ASIA LTD

宝思贸易有限公司 香港，新界，葵涌，大连排道，35~41号，
金基工业大厦，13字楼，G室。

电话：852-2487 6338 - 传真：852-2487 9688 - 电邮：adm@ptald.com.hk

Tools and equipment for watchmakers, jewellers, precision engineering

BERGEON SA

11, av. du Technicum
CH - 2400 Le Locle

Tél. + 41 32 933 60 00
Fax + 41 32 933 60 01

www.bergeon.ch
info@bergeon.ch