



# BERGEON

Nouvelle Clé spécialement développée pour ouvrir les fonds de boîtes vissés des montres de grandes dimensions. Sa forme ergonomique assure une prise en main agréable et sûre.

Diamètre d'ouverture de 18 mm à 62 mm

New Jaxa Key specifically designed to open case backs of large watches. The ergonomic shape provide a firm and comfortable grip.

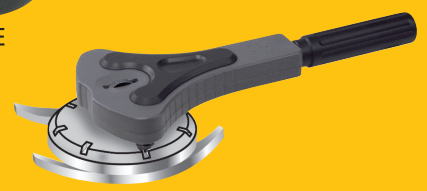
Opens diameters from 18 mm to 62 mm



JAXA ORIGINAL

No 2819-08

SWISS MADE  
Patent pending



# BERGEON

Nouveau réchaud à température variable et boîtier électronique avec affichage digital double.

Surface utile 63 x 113mm. Capacité de chauffe progressive et précise jusqu'à 180°C. Mémorisation de 2 températures de consigne.

New electric heater with adjustable temperature in an electronic case with double digital display.

Working surface of 63x113mm. Progressive heating capability up to 180°C. The heater can memorize 2 pre-set temperatures.

SWISS MADE



No 7044

# Technologies



No 30081-A05

No 30081-A10

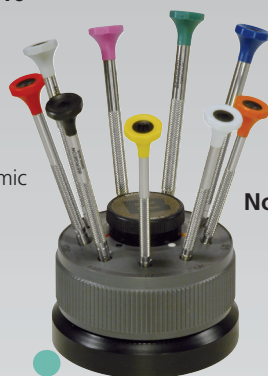
 SWISS MADE

Tournevis ergonomiques entièrement en acier inoxydable.

Entirely stainless Steel ergonomic screwdrivers



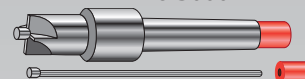
No 3054-A



No 30081-S



No 30007-MD-15



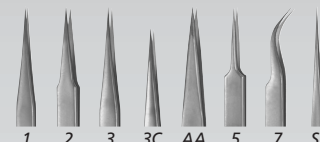
Assortiment de 15 fraises à pivot en métal dur

Assortment of end-mill, in hard metal

Support pratique pour cadrans de tous types.

Practical base for all types of dials.

No 7053



1 2 3 3C AA 5 7 SS

 SWISS MADE

Appareil à remonter les montres automatiques et mécaniques

Winding machine for automatic and mechanic watches

No 7047



**BERGEON**



EPHJ


ENVIRONNEMENT  
PROFESSIONNEL  
HORLOGERIE  
JOAILLERIE

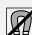
SALON INTERNATIONAL




Assortiments de 8 brucelles

Set of 8 tweezers

Acier inoxydable, No 7027   
In Stainless Steel

Antimagnétique, No 7026   
Antimagnetic

ou/or superalloy, No 7028   
(Ni-Cr-Mo)

 SWISS MADE



No 6872-A

Etablis d'horloger professionnels  
Professional watchmaker Bench

No 7005

No 7004

Microscopes numériques,  
de 200 x à 500 x  
Digital Microscope,  
from 200x to 500x




No 7003



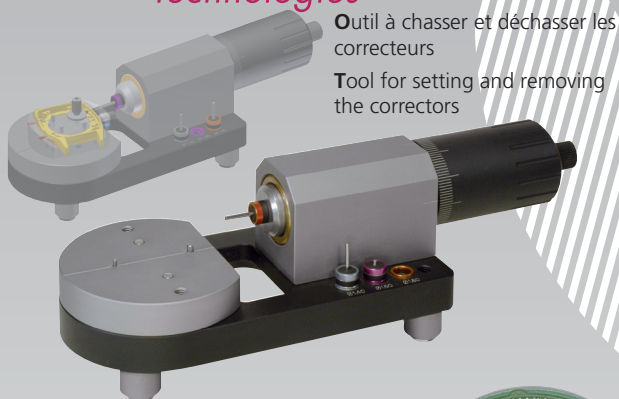
No 6890-D

No 6890-G

 SWISS MADE

Polisseuses Vario, programmable avec affichage digital  
et vitesses variable de 0 > 3600 rpm

Polishing unit Vario, simple or double with digital display  
and adjustable speed from 0 > 3600 rpm.



Outil à chasser et déchasser les correcteurs

Tool for setting and removing the correctors

Paniers de lavage HH

Cleaning baskets HH

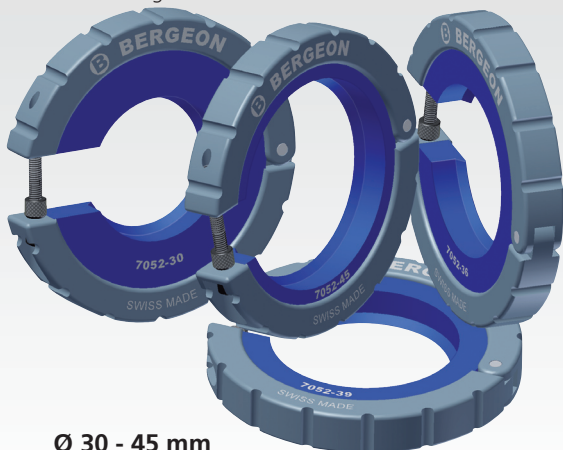
Paniers de lavage en aluminium microperforé

Cleaning basket in aluminium microperforated



Pinces à extraire les lunettes tournantes.

Extraction rings for watch bezels



Ø 30 - 45 mm



# BERGEON

by Smile Line ☺

 SWISS MADE

Une gamme Hi-Tech de produits et d'accessoires d'une grande modularité ; s'adaptent à vos besoins et à vos exigences.

Range of Hi-Tech products and accessories with wide modularity ; adapted to your needs and your requirements.

No 7014-N...



0.60	0.120
0.80	0.150
1.00	1.00
1.20	1.50



No 7014-G...

No 7050...

